



Alpine Public Library

# Between the Lines

Winter 2011-2012

Friends of the Alpine  
Public Library  
PO Box 886  
Alpine, Tx 79831  
NEW PHONE:  
432-837-2501

## Inside this issue:

FAPL President	2
Photos from the move	3
Special Donations	4
Volunteers	5
Kids' Page	6
Marathon News	7
Sponsors	8

## OFFICERS

DIANE BROWN, PRESIDENT  
JODYE STONE, VICE-PRESIDENT  
DON WETTERAUER, PAST PRES.  
KAREN BOYD, SECRETARY  
KATHY BORK, MEMBERSHIP  
PAIGE DELANEY, NEWSLETTER

PAIGE DELANEY, EXEC. DIR.

## LIFETIME MEMBERS

LIFETIME MEMBERSHIP IS  
AWARDED FOR EXCEPTIONAL  
SUPPORT OF THE LIBRARY.

VERNA BONNER  
KATHY BORK  
KAREN BOYD  
SUSAN CURRY  
ANTOINETTE EDMONDS  
ELDERS & SISTERS OF  
CHURCH OF JESUS CHRIST  
LATTER-DAY SAINTS  
MARY BETH GARRETT  
GAYLE LEWIS  
VAN ROBINSON  
CHRIS RUGGIA  
ELLEN RUGGIA  
MARILYN TERRY  
DICK ZIMMER  
JEAN ZIMMER  
JAN WILLIAMS

## With Gratitude...



After years of continuous effort from people throughout our community, it's hard to believe that as I write this we're only a few weeks away from completion, but once the paving is ready for vehicle traffic, the doors of the new Alpine Public Library will finally open. So many have helped so much on the building project that any list of thanks from the Library's Board of Directors is doomed to be incomplete. We thank the City of Alpine and the Alpine Independent School District for the land we've built on and their ongoing support.

We thank Brewster County and particularly Judge Val Beard, without whose constant encouragement, timely fundraising whip-cracking, and construction management expertise there would certainly be no building before you now.

We thank Tom Hatch of Hatch + Ulland Owen Architects, Dinosaur Valley Construction, Don Wetterauer and Mike Latta for helping to shape, build, and handle finishing details on the building.

We thank our Director and our Staff for their tremendous efforts in juggling a dozen chainsaws while planning and carrying out the move. Thankfully, relatively few limbs have been lost in the effort.

We thank the volunteers who have given so many hard-working hours in assisting with the move, and the Friends of the Alpine Public Library whose dedication to preparing the new Re-Reads Bookstore has been phenomenal. We thank every donor, large and small, who dug deep, gave early and often, and made every inch of this new building a true community effort.

And finally we give our heartfelt thanks to YOU for being our patron, for being a part of our community and giving the real meaning to the existence of the Alpine Public Library.

-Chris Ruggia, President, Alpine Public Library Board of Directors

**The Friends of the Alpine Public Library meet on the Tuesday before the Second Thursday of every month at the library at noon. Everyone is welcome.**

# JOIN TODAY!



## From the Friends President



A New Year, a New Library and a new President. I look forward to serving the Friends as president for the next two years knowing I will be ably assisted by Don Wetterauer as advisor, Jodye Stone, as vice-president and Karen Boyd as secretary.

As I write this letter the staff is moving into the new library building and under the leadership of Don Wetterauer, ReReads is preparing to reopen in its new space in the new library. Hurray! It had begun to

seem as if moving day would never arrive. Paige and her staff showed endless patience and good humor and after three months of "withdrawal pains" our ReReads customers are rejoicing.

As the new year begins, I encourage all of you to renew your membership and to encourage your friends and family to support our beautiful new library by joining the Friends of the Alpine Public Library. With our new larger space, the funds raised by the friends will be more important than ever in keeping the doors open, lights and heat on and new books on the shelves. At the December 2011 meeting the Friends budget for 2012 was passed. It was decided to give ALL funds raised by the Friends directly to the Library Board, who will include a line item

in their budget for Friends' expenses. In previous years, our funds had been designated for specific uses. Now, the Library Board will be able to use them wherever they are needed. Memberships are an important source of funds. As a Friend of the Alpine Public Library you can be as active or as inactive as you like in Friends activities. We would love to have you attend our meetings which are generally at noon the second Tuesday of the month and last an hour or less. Your ideas on how we can best support the Library will be more than welcome. If you are not a "meeting" person, join anyway. Your membership shows how much you value our Library!

-Diane Brown, President, Friends of the Alpine Public Library

**The Friends of the Library capital campaign fundraising quilt, right, was completed by the Busy Bee Quilters and Sarah McCloy at UNamelt ! Embroidery. Thank you!**

**The quilt hangs in the new library.**



## From the Director

Dear Bonnie,

Now I know what you must have gone through decades ago when the library first opened! You must have felt similar butterflies in your stomach, and a mixture of fear and excitement as opening day neared. Now that the library is moved and everything is in place, I am stunned at the extent and quality of what we

have all built. Thank you for doing the groundwork, and for creating the spirit of the Alpine Public Library. Even though the original quaint and cozy location is now being renovated, you can be sure that our staff will maintain your high standards for personalized service, and continue learning and growing with our patrons' needs. It has taken a lot of hard work, and blood, sweat, and tears, but the staff con-

tinues to come in early and work late to ensure everything is in place to continue your, and our, mission.

I wish you could join us on opening day, and I wish I could hear and see your response to our new library. Many people carry the torch that you lit. May it continue to shine for another sixty-five years.

Your friend,  
Paige

## Photos from the move...



**Check out our Nooks!** We have five categories: Kids, Juniors, Young Adult, Mystery/Sci-fi and Fiction/Non-Fiction. Each nook is loaded with a selection of titles for the category and you can read as many books as you'd like while you have the Nook checked out. These devices are easy and intuitive to use. We will be glad to give you a demo.

What I especially like is that you can change the book to suit your needs. Forgot your reading glasses? Just make the type larger. A simple swipe turns the page and one Nook can keep you in books for your entire trip! Come by and take a Nook tour.



## Special Donations

### In Honor Of

Michael William Atwood

-Jill Frances Gorde

David Forchheimer

-Juliette & Gregory Schwab

Pam Spooner

-Mike & Martha Latta

The Book Club

-Lady Chachi Hawkins

Liz Rogers

-Lady Chachi Hawkins

Anne & Malcolm Calaway

-Kathy & Albert Bork

APL Staff & Volunteers Kathy  
Bork, Karen Boyd, Marilyn

Terry, & Martha Latta

-Tommy Joe & Susan Curry

### In Memory Of

Peggy Martin

-Sylvia Forchheimer

Mary d'Amboise

-Wayne Cline & Deborah

Allison

Helen Shryne McKenna

-Kathy & Albert Bork

Frances Forster

-Vern & Virginia Elliott

Marjorie Jean Foust

-Allan & Paige Delaney

Mark Penna

-Rex & Eleanor Wilson

-Mike & Martha Latta

-Allan & Paige Delaney

-Juliette & Gregory Schwab

Joanna & Lee Cowell

-Billy & Betty Cowell

-Judge Kenneth D. DeHart

-Kathy & Albert Bork

-Sperry Hunt

-John & Donna Ehrke

-Kiwanis Club of Alpine

-Ellen Boyd

-Juliette & Gregory Schwab

-Kathryn & Edwin Tetreault

-Robert & Margaret Matthews

-Thomas & Nancy Van Auken

Dr. & Mrs. Samuel Davis

-Donna Massey

-Johnnie Mae Neely

-Toni Pate Brookover & family

-Mr. & Mrs. J.R. Hudson

-Betty Prude

-Helen & Tweed Newell



-Bob & Lucy Ward

-Tommy Joe & Susan Curry

Joe. C. LaBaume

-Gerhard & Janet Moeller

Ellen Lethco

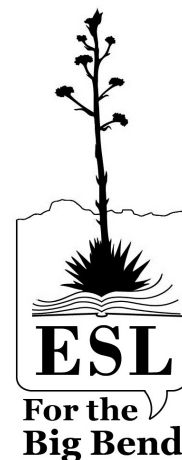
-Robert & Margaret Matthews

Merle Tilley

-Kathryn & Edwin Tetreault

Mrs. Elizabeth Winter

-Juliette & Gregory Schwab



Volunteer  
English lan-  
guage tutors  
needed! Lo-  
cations: Al-  
pine, Study  
Butte, and  
Fort Davis.  
Contact  
Paige for de-  
tails.

## Thanks to so many volunteers who helped us move!

Connie Roe  
Renee Mick  
Margaret Matthews  
Ginger Elliott  
Karen Boyd  
Marilyn Terry  
Martin Terry  
Eleanor Wilson  
LaFern Scudday  
Cheryl Frances  
Don Wetterauer  
Bill Elliott  
Allan Delaney  
Mike Latta  
Martha Latta  
Mark Hannan  
Audrey Painter  
Elders of the Church of Latter Day  
Saints  
Pat Hector  
Rachel Hector  
Vicki Kelley  
Jodye Stone  
Henry Knutsen  
Bennye Meredith

Kyle Jackson  
Alton White  
Masa Ohnishi  
Yves Reulet  
Patrick Kenney  
Johnny Brooks  
Joseph Torres  
Jan Jacobs  
Jane Sager  
Kathy Bork  
Anne Calaway  
Mary Jane Morgan  
Chris Ruggia  
Ken Durham  
Juliette Schwab  
William Headrick  
Elaine Davenport  
Shelley Dreiss  
James Beaulieu  
Brent Colman  
Lee Epps  
Priscilla Maulsby  
Betty Fitzgerald  
Earlene Graham  
Randy Mitchell

## APL Water Tank Donated to Middle School Garden



Above, APL librarian Mary Beth Garrett helps Justin Ciniceros move a water collection tank from APL to the Alpine Middle School. The tank will collect rainwater from the school roof for use in the school garden. The food grown in the garden is used in the cafeteria, and the kids are responsible for the work. Some of the water is used for the worm farm which lives at the garden.



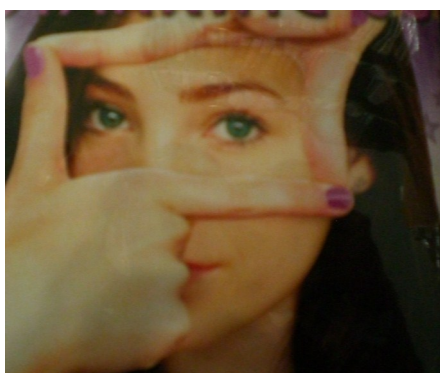
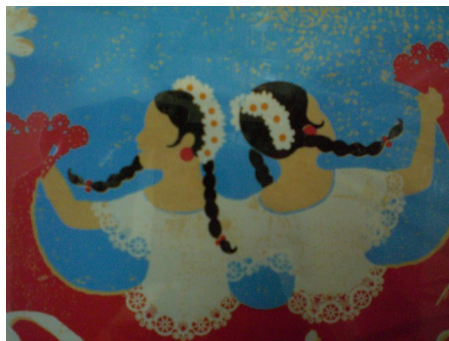
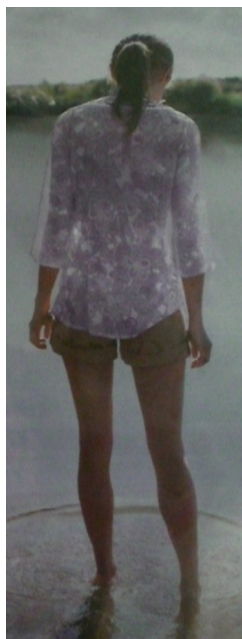
**Booth Brothers Paving**, the contractor who completed the star designs at Alpine city intersections, generously donated several pallets of extra pavers to APL. They will likely be used for sidewalks on the west side of the building.



Thanks to **Dr. Jay Fielder, DDS**, who donated materials for APL's new Happy Teeth program. Mary Beth Garrett is kicking off this program in February, Dental Health Month, by taking the program on the road to South County schools.

## Kids' Page

Can you find these pictures in the new library? Cut out this page. Write down the names of these book titles, and win a prize!



## Marathon Branch



Isaiah Briones and Santa



Max and Mia Lewis at the MPL tea party



Crystal Ybarro with Santa (Wayne Sheehan).

**MPL  
TODDLER TIME  
WEDNESDAYS 1PM  
BOOKS, CRAFTS,  
FUN!**



Deputy Joe and Cheryl Wallace with granddaughter Lottie King and Santa.

## ADULT CRAFTS AT MPL!

**THURSDAYS 2-4PM**

**CALL CAROL FOR INFORMATION  
432-386-4136**

### RE-READS BOOKSTORE

A project of the Alpine Public Library

*Support your library by enjoying used books at great prices!*  
**WE HAVE MOVED! LOOK FOR US INSIDE THE NEW LIBRARY.**

**VOLUNTEER**  
Ave. E at 7th St.  
Now open 6 days a week!  
Mon-Tues 10-4 / Wed-Sat 10-5



Kathy Wallace played the flute at the holiday open house.

### Alpine Public Library

805 W Avenue E  
Alpine, Texas 79830

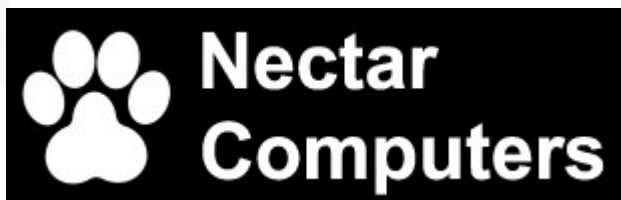
Phone: 432-837-2621  
Fax: 432-837-7123  
Bookstore 432-837-2501  
[www.alpinepubliclibrary.org](http://www.alpinepubliclibrary.org)



NON PROFIT  
ORGANIZATION  
U.S. POSTAGE  
PAID  
ALPINE, TX  
PERMIT #7

### Some of our generous sponsors:

V A S T graphics



**MORRISON**  
*True Value.*



**Clausen  
Janitorial  
Service**



**DOLLAR GENERAL®**  
LITERACY FOUNDATION

